

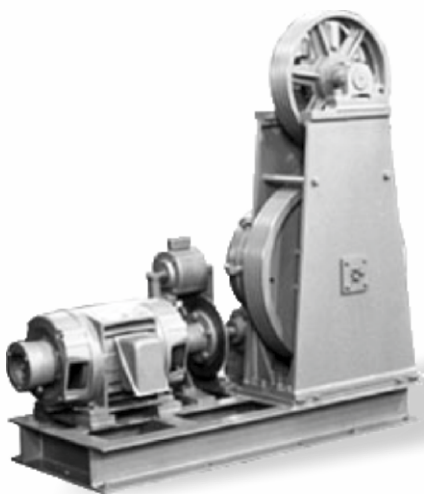
CE | ISO 9001 : 2015
Certified



GEARLESS ELEVATOR MACHINES

www.tectronicsindia.com

MAKE SMALL CHANGE





BRING **BIG**
SAVING



Get up to

40%

Energy Saving

Get up to

60%

Space Saving

Get up to

70%

Saving on
Maintenance Cost

Get Fully

**Eco
Friendly**

Product

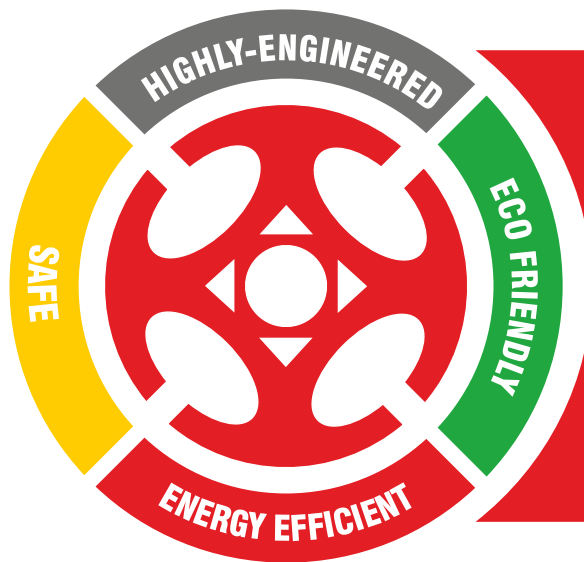
Get

**Noise
Free**

Environment



Power of Smart Engineering





Power of Smart Engineering

About Us

Tectronics Engineers is one of the leading and accomplished Companies in the production and Quality manufacturing of Gearless Elevator Machines in the market today. The Company has come up with the latest technical procedures and practices. The company has an assortment of solutions to the customers. It gives the customers best of all services along with cost effective, economical and affordable price range.

Employees and experts of Tectronics always stay engaged in continual innovation and quality improvement in all processes and products. The Company boasts of their best service available with a team of experts, technicians, and professionals to cater to the demands of customer.

Gearless Traction Machine

A gearless driving machine is a direct-drive system in which there is no reduction gear between the motor and the drive (or hoisting) sheave. That is, the drive sheave is connected directly to the motor and brake. In the modern era, Gearless designs are being used in the tallest structures of World.



*Note : Products undergo continuous up gradations. Hence, above mentioned specifications are subjected to change without prior notice. **



For
SMOOTH &
Eco-Friendly Ride



Gearless Technology

With the use of Gearless traction machine, Ride can be smoother, Energy-saving can be improved, and environment-friendly features can be enhanced.



No Machine Room Require

Tectronics's machines are remarkably light weight and space-efficient, compared to traditional traction elevators. Less structural support is required, and easier access for machine room service enhances safety standards.



Energy Saving

The optimized power factor of the Tectronics Machines means it utilizes less power and produces lesser heat than traditional traction elevators, with energy savings of up to 40% (compared to conventional geared elevators.)



Noise Free

Tectronics gearless elevator machines works without any type of vibration or noise, ensuring an ultimately peaceful, comfortable and smooth performance.



Compact in Size

Tectronics gearless elevator machines are compact in size, minimizing space requirements by eliminating the traction machine gearbox.



Power of Smart Engineering

OUR VISION

To Become **India's No.1**
in Segment of Gearless Elevator Machine
Manufacturing Company by 2025.

OUR MISSION

As a Continuous Process,
We'll Work Hard to Provide
Technologically Ultra Modern Product
to Global Customer.





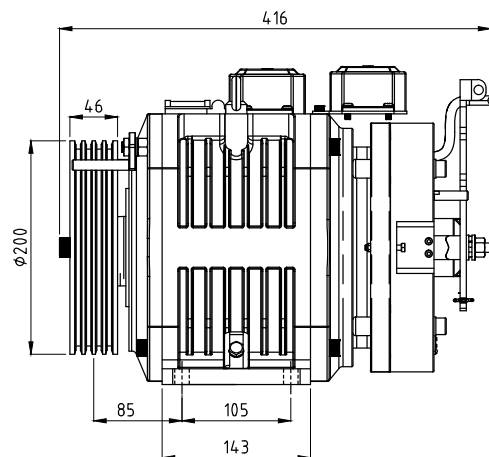
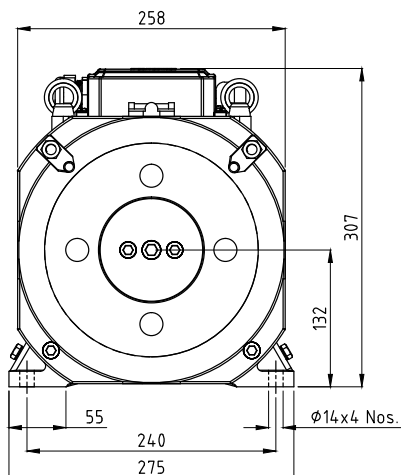
RTG 04 Series

Home Elevator MRL

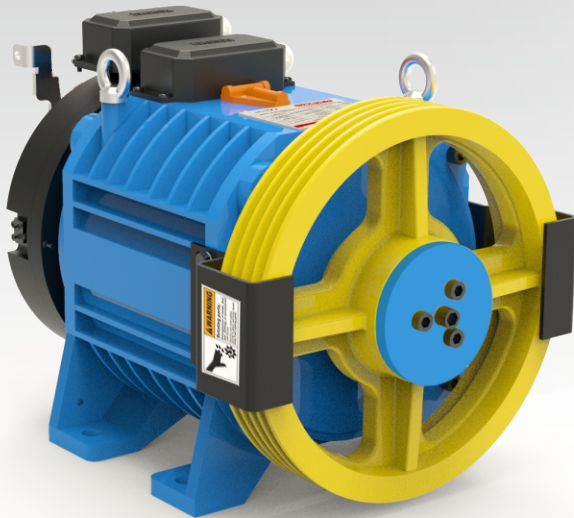
Technical Specifications

Voltage : 230 V / 380 V | Pole : 16 | Duty Cycle : S3 40% | Brake Voltage : 110 VDC | Max. Static Load : 1000 kg

Model No.	Duty Load (kg)	Passenger Capacity	Speed (m/s)	Sheave Dia. (mm)	Ratio of Roping	No. of Ropes	Rope Dia. (mm)	Rated Current (A)	Power (kW)	RPM	Torque (Nm)	Rated Frequency (Hz)	IP protection	Start / Hr.	Machine Weight (kg) (Approx.)
RTG 0404 200	300	4	0.32	200	2:1	4	6	4.8	0.63	60	100	8.0	IP 41	180	78
						3	8								
RTG 0404 A-200	300	4	0.50	200	2:1	4	6	5.0	1.00	96	100	12.8	IP 41	180	78
						3	8								



All dimensions are in mm

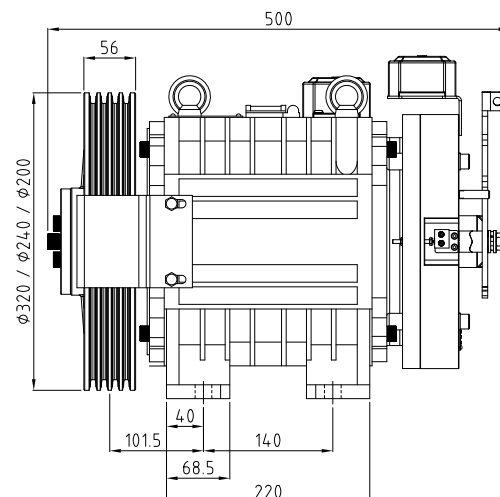
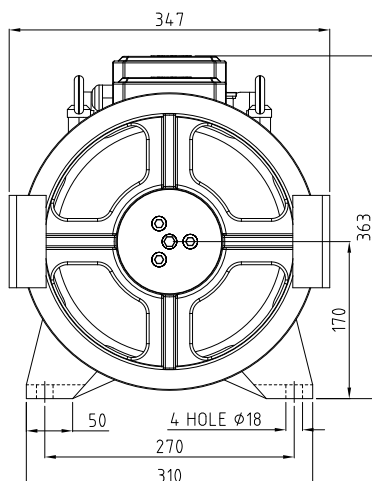


RTG 24P 06 Series

Technical Specifications

Voltage : 380 V | Pole : 24 | Duty Cycle : S3 40% | Brake Voltage : 110 VDC | Max. Static Load : 2500 kg

Model No.	Duty Load(kg)	Passenger Capacity	Speed (m/s)	Sheave Dia. (mm)	Ratio of Roping	No. of Ropes	Rope Dia. (mm)	Rated Current (A)	Power (kW)	RPM	Torque (Nm)	Rated Frequency (Hz)	IP Protection	Start / Hr.	Machine Weight (kg) (Approx.)
RTG 24 P 0606 A-320	408	6	0.50	320	2	4	8	8.0	1.4	60	220	12.0	IP41	180	155
RTG 24 P 0606 B-320	408	6	0.75	320	2	4	8	8.0	2.1	90	220	18.0	IP41	180	155
RTG 24 P 0606 C-320	408	6	1.00	320	2	4	8	8.0	2.8	120	220	24.0	IP41	180	155
RTG 24 P 0606 D-320	408	6	1.25	320	2	4	8	9.5	3.4	149	220	29.8	IP41	180	155
RTG 24 P 0606 E-320	408	6	1.50	320	2	4	8	10.0	4.1	179	220	35.8	IP41	180	155
RTG 24 P 0606 A-240	408	6	0.50	240	2	4	8	8.0	1.8	80	220	16.0	IP41	180	155
RTG 24 P 0606 B-240	408	6	0.75	240	2	4	8	8.0	2.8	120	220	24.0	IP41	180	155
RTG 24 P 0606 C-240	408	6	1.00	240	2	4	8	9.5	3.7	160	220	32.0	IP41	180	155
RTG 24 P 0606 A-200	408	6	0.50	200	2	4	8	10.0	2.2	96	220	19.2	IP41	180	155
RTG 24 P 0606 B-200	408	6	0.75	200	2	4	8	9.5	3.3	144	220	28.8	IP41	180	155
RTG 24 P 0606 C-200	408	6	1.00	200	2	4	8	10.0	4.4	191	220	38.2	IP41	180	155



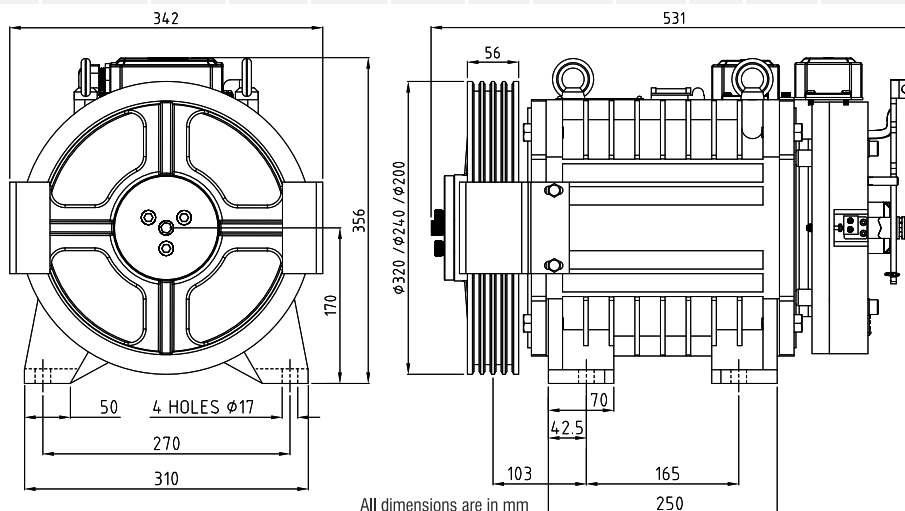


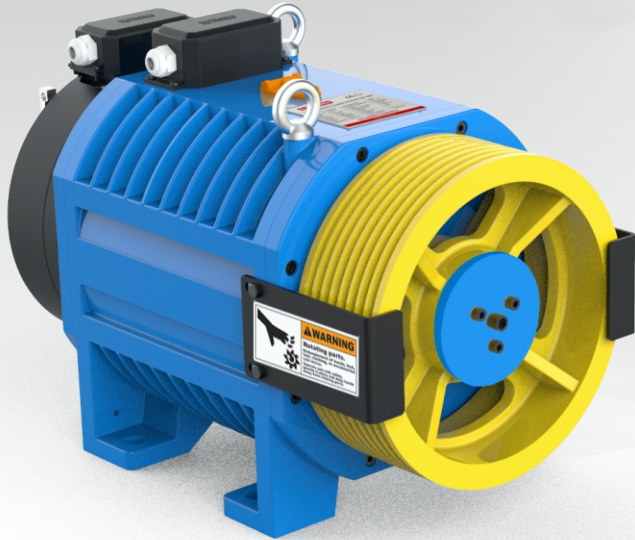
RTG 24P 08 Series

Technical Specifications

Voltage : 380 V | Pole : 24 | Duty Cycle : S3 40% | Brake Voltage : 110 VDC | Max. Static Load : 2500 kg

Model No.	Duty Load(kg)	Passenger Capacity	Speed (m/s)	Sheave Dia. (mm)	Ratio of Roping	No. of Ropes	Rope Dia. (mm)	Rated Current (A)	Power (kW)	RPM	Torque (Nm)	Rated Frequency (Hz)	IP Protection	Start / Hr.	Machine Weight (kg) (Approx.)
RTG 24 P 0806 A-320	544	8	0.50	320	2	4	8	8.5	1.6	60	250	12.0	IP41	180	165
RTG 24 P 0806 B-320	544	8	0.75	320	2	4	8	8.5	2.4	90	250	18.0	IP41	180	165
RTG 24 P 0806 C-320	544	8	1.00	320	2	4	8	9.0	3.1	120	250	24.0	IP41	180	165
RTG 24 P 0806 D-320	544	8	1.25	320	2	4	8	10.5	3.9	149	250	29.8	IP41	180	165
RTG 24 P 0808 E-320	544	8	1.50	320	2	4	8	11.0	4.7	179	250	35.8	IP41	180	165
RTG 24 P 0808 F-320	544	8	1.75	320	2	4	8	11.5	5.5	209	250	41.8	IP41	180	165
RTG 24 P 0808 A-240	544	8	0.50	240	2	4	8	8.5	2.1	80	250	16.0	IP41	180	165
RTG 24 P 0808 B-240	544	8	0.75	240	2	4	8	9.0	3.1	120	250	24.0	IP41	180	165
RTG 24 P 0808 C-240	544	8	1.00	240	2	4	8	11.0	4.2	160	250	32.0	IP41	180	165
RTG 24 P 0808 D-240	544	8	1.25	240	2	4	8	11.5	5.2	199	250	39.8	IP41	180	165
RTG 24 P 0808 A-200	544	8	0.50	200	2	4	8	8.5	2.5	96	250	19.2	IP41	180	165
RTG 24 P 0808 B-200	544	8	0.75	200	2	4	8	10.0	3.8	144	250	28.8	IP41	180	165
RTG 24 P 0808 C-200	544	8	1.00	200	2	4	8	11.5	5.0	191	250	38.2	IP41	180	165



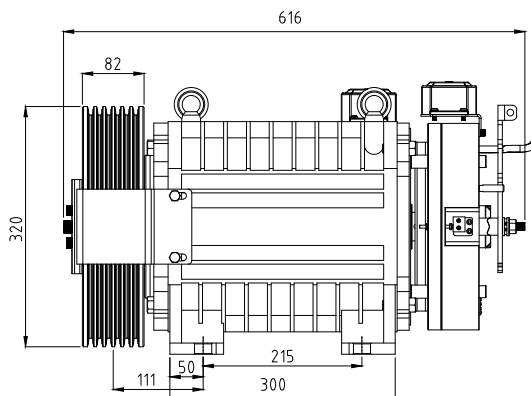
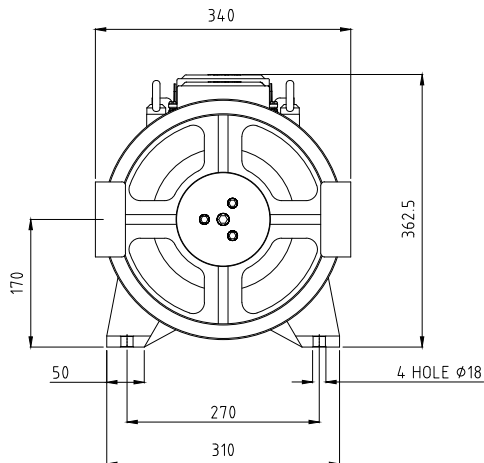


RTG 24 P 1010 Series

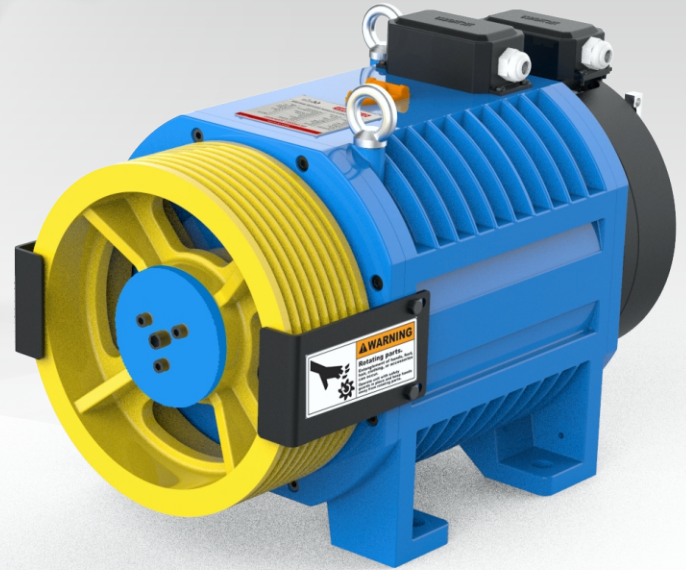
Technical Specifications

Voltage : 380 V | Pole : 24 | Duty Cycle : S5 40% | Brake Voltage : 110 VDC | Max. Static Load : 3500 kg

Model No.	Duty Load(kg)	Passenger Capacity	Speed (m/s)	Sheave Dia. (mm)	Ratio of Roping	No. of Ropes	Rope Dia. (mm)	Rated Current (A)	Power (kW)	RPM	Torque (Nm)	Rated Frequency (Hz)	IP Protection	Start / Hr.	Machine Weight (kg) (Approx.)
RTG 24 P 1010 A-200	680	10	0.50	200	2:1	6	8	9.00	3.40	96	340	19.2	IP41	180	210
RTG 24 P 1010 B-200	680	10	0.75	200	2:1	6	8	12.90	4.70	141	340	28.2	IP41	180	210
RTG 24 P 1010 C-200	680	10	1.00	200	2:1	6	8	16.20	6.60	190	340	38.0	IP41	180	210
RTG 24 P 1010 A-240	680	10	0.50	240	2:1	6	8	8.30	3.00	80	340	16.0	IP41	180	210
RTG 24 P 1010 B-240	680	10	0.75	240	2:1	6	8	11.00	4.20	120	340	24.0	IP41	180	210
RTG 24 P 1010 C-240	680	10	1.00	240	2:1	6	8	15.00	5.40	160	340	32.0	IP41	180	210
RTG 24 P 1010 A-320	680	10	0.50	320	2:1	6	8	8.00	2.10	60	340	12.0	IP41	180	210
RTG 24 P 1010 B-320	680	10	0.75	320	2:1	6	8	9.00	3.10	90	340	18.0	IP41	180	210
RTG 24 P 1010 C-320	680	10	1.00	320	2:1	6	8	11.00	4.20	120	340	24.0	IP41	180	210
RTG 24 P 1010 D-320	680	10	1.25	320	2:1	6	8	14.00	5.20	150	340	30.0	IP41	180	210
RTG 24 P 1010 E-320	680	10	1.50	320	2:1	6	8	16.00	6.40	180	340	36.0	IP41	180	210



All dimensions are in mm

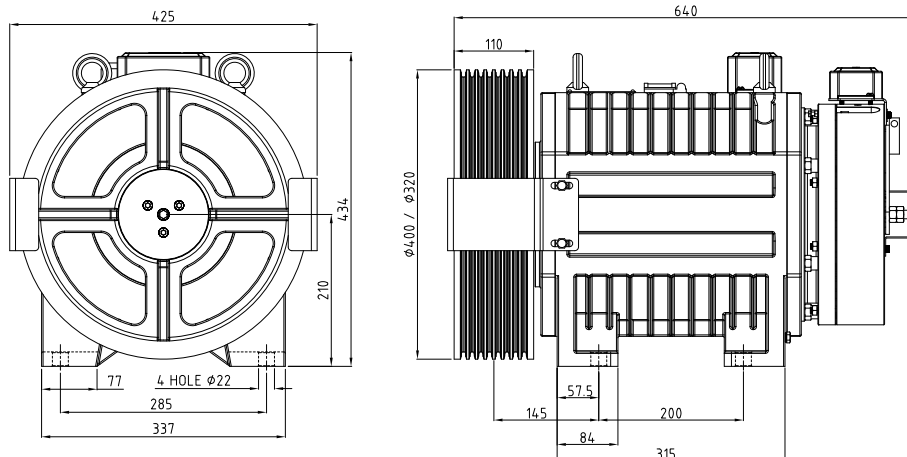


RTG 24P 12 Series

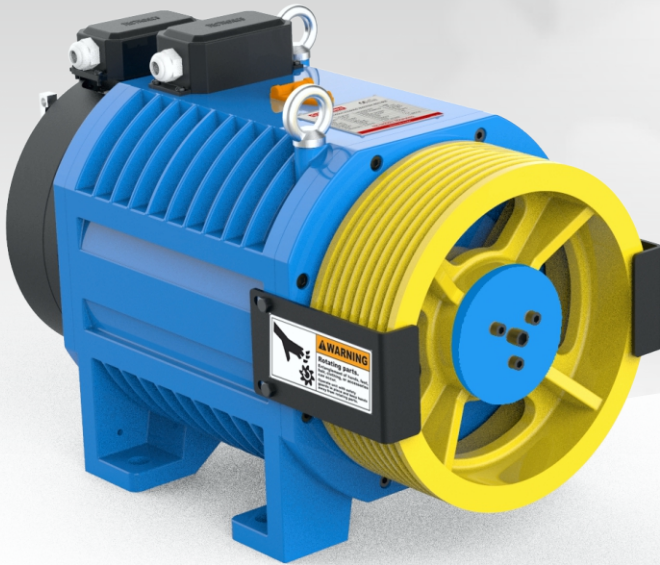
Technical Specifications

Voltage : 380 V | Pole : 24 | Duty Cycle : S5 40% | Brake Voltage : 110 VDC | Max. Static Load : 3500 kg

Model No.	Duty Load(kg)	Passenger Capacity	Speed (m/s)	Sheave Dia. (mm)	Ratio of Roping	No. of Ropes	Rope Dia. (mm)	Rated Current (A)	Power (kW)	RPM	Torque (Nm)	Rated Frequency (Hz)	IP Protection	Start / Hr.	Machine Weight (kg) (Approx.)
RTG 24 P 1212 A-400	800	12	0.50	400	2	8	8	14.0	2.2	48	430	9.6	IP41	180	280
RTG 24 P 1212 B-400	800	12	0.75	400	2	8	8	14.0	3.2	72	430	14.4	IP41	180	280
RTG 24 P 1212 C-400	800	12	1.00	400	2	8	8	14.5	4.3	96	430	19.2	IP41	180	280
RTG 24 P 1212 D-400	800	12	1.25	400	2	8	8	13.0	5.4	119	430	23.8	IP41	180	280
RTG 24 P 1212 E-400	800	12	1.50	400	2	8	8	15.0	6.4	143	430	28.6	IP41	180	280
RTG 24 P 1212 A-320	800	12	0.50	320	2	8	8	14.0	2.7	60	430	12.0	IP41	180	280
RTG 24 P 1212 B-320	800	12	0.75	320	2	8	8	14.5	4.1	90	430	18.0	IP41	180	280
RTG 24 P 1212 C-320	800	12	1.00	320	2	8	8	13.0	5.4	119	430	23.8	IP41	180	280
RTG 24 P 1212 D-320	800	12	1.25	320	2	8	8	15.0	6.7	149	430	29.8	IP41	180	280
RTG 24 P 1212 E-320	800	12	1.50	320	2	8	8	19.0	8.1	179	430	35.8	IP41	180	280



All dimensions are in mm

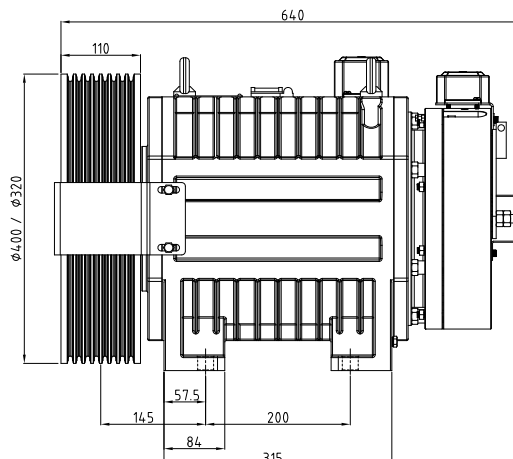
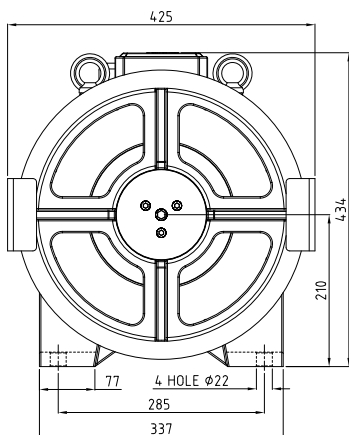


RTG 24P 13 Series

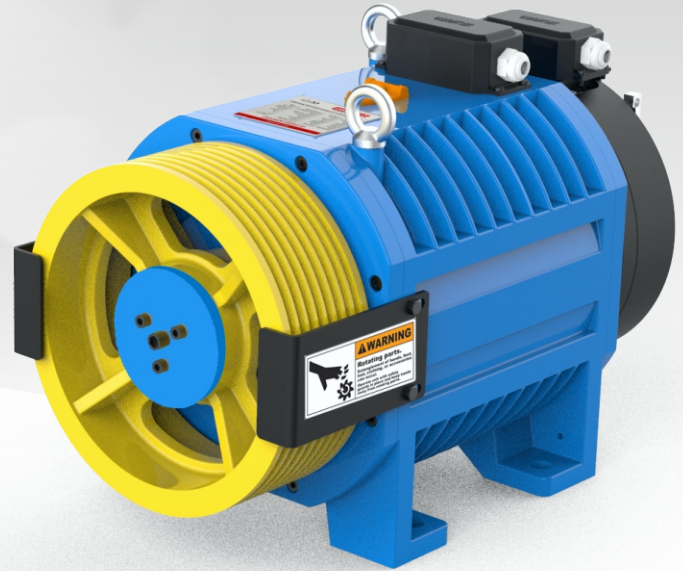
Technical Specifications

Voltage : 380 V | Pole : 24 | Duty Cycle : S5 40% | Brake Voltage : 110 VDC | Max. Static Load : 3500 kg

Model No.	Duty Load(kg)	Passenger Capacity	Speed (m/s)	Sheave Dia. (mm)	Ratio of Roping	No. of Ropes	Rope Dia. (mm)	Rated Current (A)	Power (kW)	RPM	Torque (Nm)	Rated Frequency (Hz)	IP Protection	Start / Hr.	Machine Weight (kg) (Approx.)
RTG 24 P 1213 A-320	884	13	0.50	320	2:1	6	8	15	2.80	60	435	12.0	IP41	180	280
RTG 24 P 1213 A-400	884	13	0.50	400	2:1	6	8	15	2.30	48	435	9.6	IP41	180	280
RTG 24 P 1213 B-320	884	13	0.75	320	2:1	6	8	15	4.20	90	435	18.0	IP41	180	280
RTG 24 P 1213 B-400	884	13	0.75	400	2:1	6	8	14.5	3.30	72	435	14.4	IP41	180	280
RTG 24 P 1213 C-320	884	13	1.00	320	2:1	6	8	15	5.50	119	435	23.8	IP41	180	280
RTG 24 P 1213 C-400	884	13	1.00	400	2:1	6	8	16.5	4.50	96	435	19.2	IP41	180	280
RTG 24 P 1213 D-320	884	13	1.25	320	2:1	6	8	16	6.90	149	435	29.8	IP41	180	280
RTG 24 P 1213 D-400	884	13	1.25	400	2:1	6	8	15	5.60	119	435	23.8	IP41	180	280
RTG 24 P 1213 E-320	884	13	1.50	320	2:1	6	8	20	8.20	179	435	35.8	IP41	180	280
RTG 24 P 1213 E-400	884	13	1.50	400	2:1	6	8	16	6.50	143	435	28.6	IP41	180	280



All dimensions are in mm

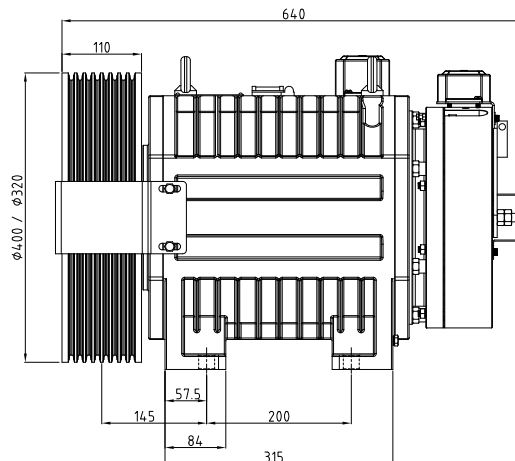
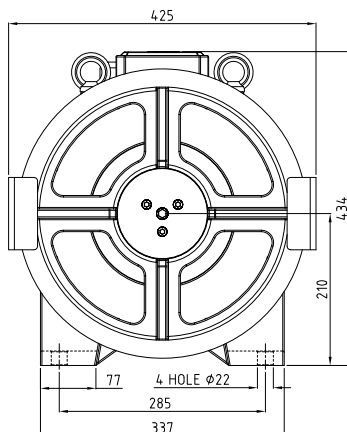


RTG 24P 16 Series

Technical Specifications

Voltage : 380 V | Pole : 24 | Duty Cycle : S5 40% | Brake Voltage : 110 VDC | Max. Static Load : 3500 kg

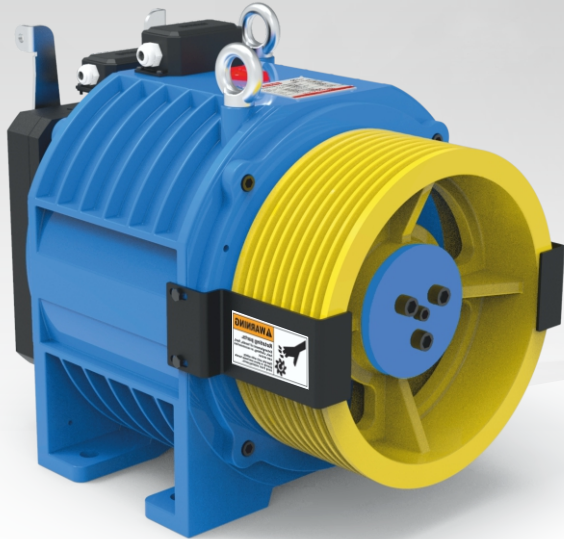
Model No.	Duty Load(kg)	Passenger Capacity	Speed (m/s)	Sheave Dia. (mm)	Ratio of Roping	No. of Ropes	Rope Dia. (mm)	Rated Current (A)	Power (kW)	RPM	Torque (Nm)	Rated Frequency (Hz)	IP Protection	Start / Hr.	Machine Weight (kg) (Approx.)
RTG 24 P 1616 A-400	1150	16	0.50	400	2	8	8	20.0	3.2	48	630	9.6	IP41	180	280
RTG 24 P 1616 B-400	1150	16	0.75	400	2	8	8	20.5	4.7	72	630	14.4	IP41	180	280
RTG 24 P 1616 C-400	1150	16	1.00	400	2	8	8	21.0	6.3	96	630	19.2	IP41	180	280
RTG 24 P 1616 D-400	1150	16	1.25	400	2	8	8	18.0	7.8	119	630	23.8	IP41	180	280
RTG 24 P 1616 E-400	1150	16	1.50	400	2	8	8	22.0	9.4	143	630	28.6	IP41	180	280
RTG 24 P 1616 A-320	1150	16	0.50	320	2	8	8	20.0	4.0	60	630	12.0	IP41	180	280
RTG 24 P 1616 B-320	1150	16	0.75	320	2	8	8	20.5	5.9	90	630	18.0	IP41	180	280
RTG 24 P 1616 C-320	1150	16	1.00	320	2	8	8	18.0	7.8	119	630	23.8	IP41	180	280
RTG 24 P 1616 D-320	1150	16	1.25	320	2	8	8	21.0	9.8	149	630	29.8	IP41	180	280
RTG 24 P 1616 E-320	1150	16	1.50	320	2	8	8	23.0	11.8	179	630	35.8	IP41	180	280



All dimensions are in mm



Power of Smart Engineering

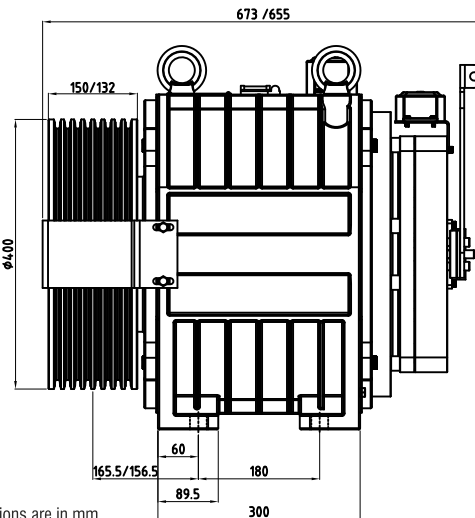
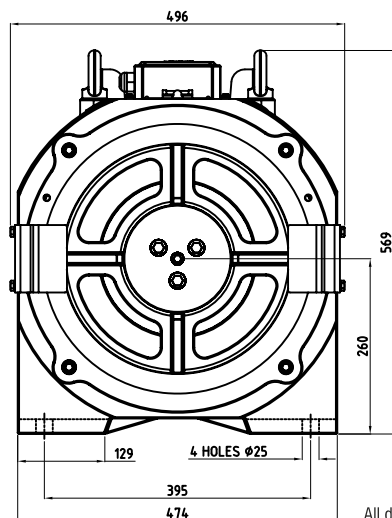


RTG 32P 1.6 Series

Technical Specifications

Voltage : 380 V | Pole : 32 | Duty Cycle : S5 40% | Brake Voltage : 110 VDC | Max. Static Load : 5500 kg

Model No.	Duty Load(kg)	Passenger Capacity	Speed (m/s)	Sheave Dia. (mm)	Ratio of Roping	No. of Ropes	Rope Dia. (mm)	Rated Current (A)	Power (kW)	RPM	Torque (Nm)	Rated Frequency (Hz)	IP Protection	Start / Hr.	Machine Weight (kg) (Approx.)
RTG 32 P 1.6 T C-400	1600	24	1.00	400	2	8	10	25.0	11.00	95	1110	25.3	IP41	240	480
RTG 32 P 1.6 T C-400	1600	24	1.00	400	2	9	10	25.0	11.00	95	1110	25.3	IP41	240	480



All dimensions are in mm

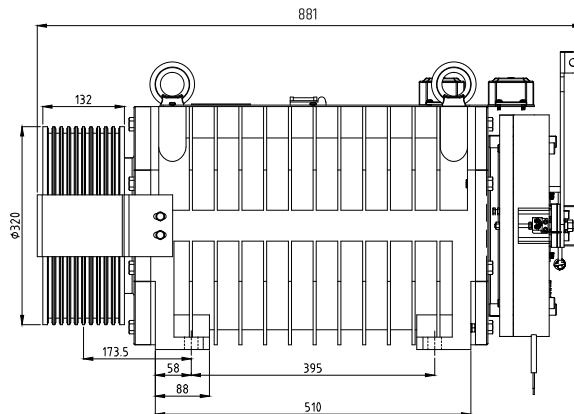
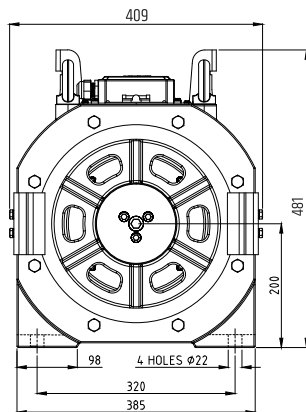


RTG 2500 Series

Technical Specifications

Voltage : 400 V | Pole : 18 | Duty Cycle : S3 40% | Brake Voltage : 230 VAC/110 VDC | Max. Static Load : 5500 kg

Model No.	Duty Load(kg)	Passenger Capacity	Speed (m/s)	Sheave Dia. (mm)	Ratio of Roping	No. of Ropes	Rope Dia. (mm)	Rated Current (A)	Power (kW)	RPM	Torque (Nm)	Rated Frequency (Hz)	IP Protection	Start / Hr.	Machine Weight (kg) (Approx.)
RTG 2500 1.6 C-320	1600	24	1.00	320	2	10	8	27	10.0	120	800	18	IP41	180	480
RTG 2500 2.0 C-320	2000	30	1.00	320	2	10	8	32	12.6	120	1000	18	IP41	180	480
RTG 2500 2.5 C-320	2500	36	1.00	320	2	10	8	38	15.1	120	1200	18	IP41	180	480
RTG 3.0 T A-320	3000	44	0.50	320	2:1	10	8	37	9.50	60	1500	9.0	IP41	180	480
RTG 3.0 T B-321	3000	44	0.75	320	2:1	10	8	45	14.20	90	1500	13.5	IP41	180	480
RTG 3.0 T C-322	3000	44	1.00	320	2:1	10	8	50	18.90	120	1500	18.0	IP41	180	480



All dimensions are in mm

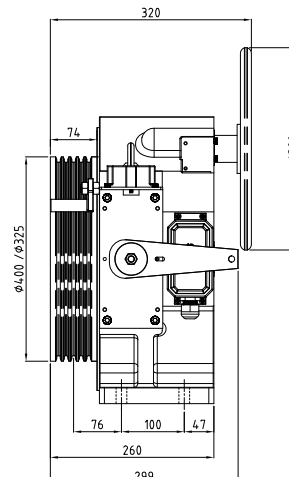
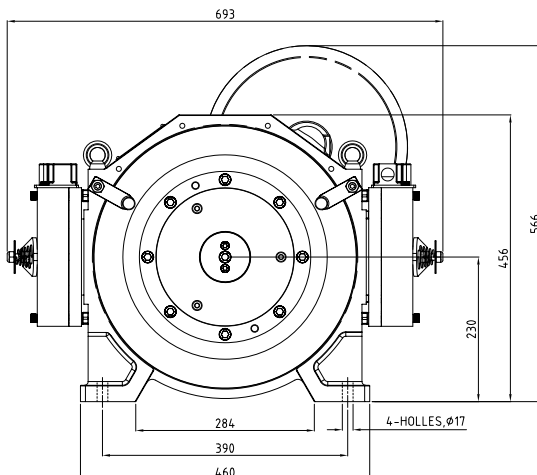


TG 08 Series

Technical Specifications

Voltage : 380 V | Pole : 20 | Duty Cycle : S5 40% | Brake Voltage : 110 VDC | Max. Static Load : 2500 kg

Model No.	Duty Load(kg)	Passenger Capacity	Speed (m/s)	Sheave Dia. (mm)	Ratio of Roping	No. of Ropes	Rope Dia. (mm)	Rated Current (A)	Power (kW)	RPM	Torque (Nm)	Rated Frequency (Hz)	IP Protection	Start / Hr.	Machine Weight (kg) (Approx.)
TG 0806 A-325	450	6	0.50	325	2	5	8	4.1	1.6	59	265	9.80	IP 41	180	205
TG 0806 C-325	450	6	1.00	325	2	5	8	7.9	3.3	118	265	19.70	IP 41	180	205
TG 0806 E-400	450	6	1.50	400	2	5	8	12.2	4.0	143	265	23.80	IP 41	180	215
TG 0808 A-325	550	8	0.50	325	2	5	8	6.4	1.8	59	290	9.80	IP 41	180	215
TG 0808 C-325	550	8	1.00	325	2	5	8	9.3	3.6	118	290	19.70	IP 41	180	215
TG 0808 E-400	550	8	1.50	400	2	5	8	15.0	4.3	143	290	23.80	IP 41	180	215
TG 0810 A-325	680	10	0.50	325	2	5	8	7.1	2.2	59	350	9.80	IP 41	180	215
TG 0810 C-325	680	10	1.00	325	2	5	8	10.3	4.3	118	350	19.70	IP 41	180	215



All dimensions are in mm

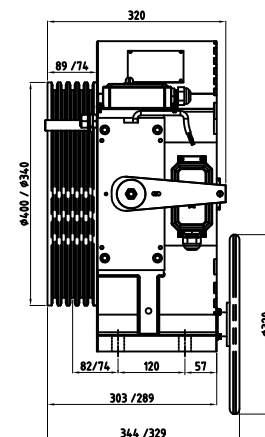
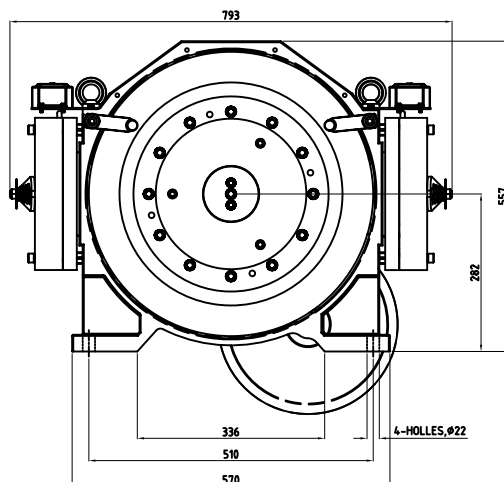


TG 10 Series

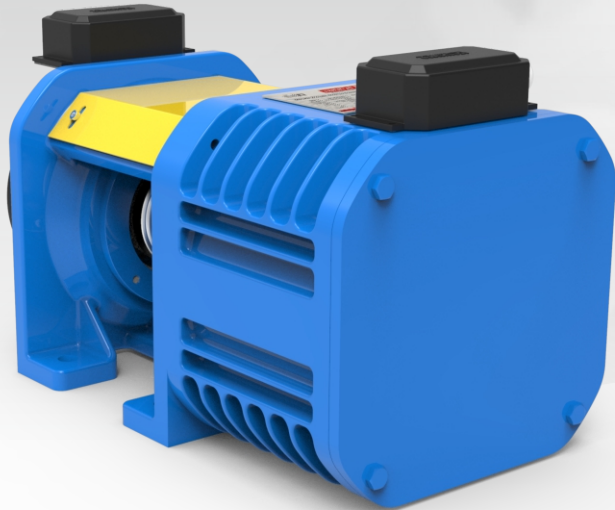
Technical Specifications

Voltage : 380 V | Pole : 20 | Duty Cycle : S5 40% | Brake Voltage : 110 VDC | Max. Static Load : 3500 kg

Model No.	Duty Load(kg)	Passenger Capacity	Speed (m/s)	Sheave Dia. (mm)	Ratio of Roping	No. of Ropes	Rope Dia. (mm)	Rated Current (A)	Power (kW)	RPM	Torque (Nm)	Rated Frequency (Hz)	IP Protection	Start / Hr.	Machine Weight (kg) (Approx.)
TG 1010 A-340	680	10	0.50	340	2	5	8	7.0	2.3	56	395	9.30	IP 41	180	350
TG 1010 C-340	680	10	1.00	340	2	5	8	12.3	4.6	112	395	18.70	IP 41	180	350
TG 1010 E-340	680	10	1.50	340	2	5	8	17.6	7.0	169	395	28.20	IP 41	180	350
TG 1012 A-340	816	12	0.50	340	2	5	8	7.3	3.1	56	525	9.30	IP 41	180	350
TG 1012 C-340	816	12	1.00	340	2	5	8	16.5	6.2	112	525	18.70	IP 41	180	350
TG 1014 A-400	952	14	0.50	400	2	5	10	8.0	3.0	48	590	8.00	IP 41	180	350
TG 1014 C-400	952	14	1.00	400	2	5	10	13.5	5.9	96	590	16.00	IP 41	180	350
TG 1016 A-400	1088	16	0.50	400	2	5	10	9.0	3.4	48	670	8.00	IP 41	180	350
TG 1016 C-400	1088	16	1.00	400	2	5	10	15.7	6.7	96	670	16.00	IP 41	180	350



All dimensions are in mm

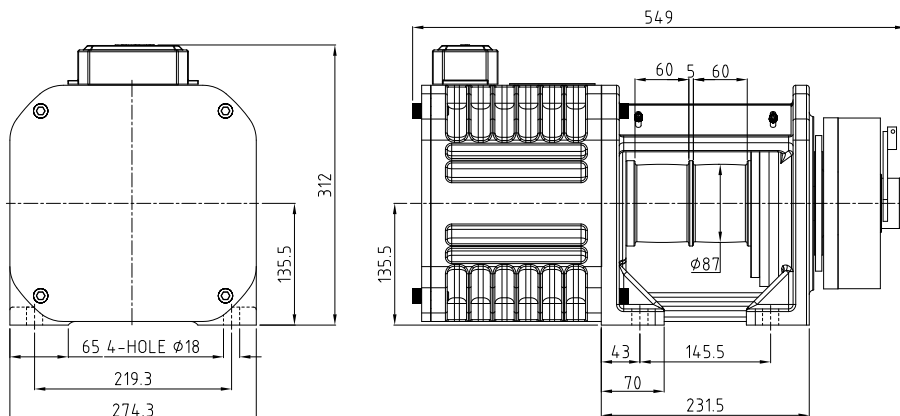


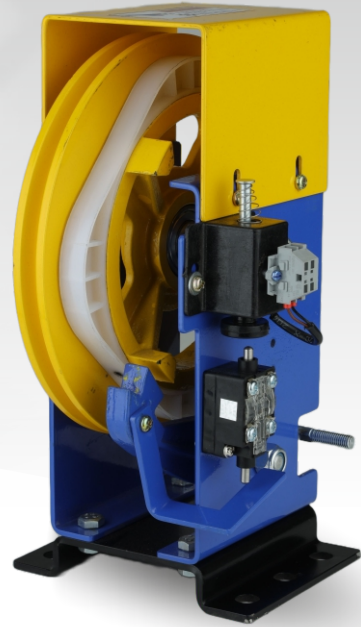
RTG BD 06 Series

Technical Specifications

Voltage : 380 V | Pole : 16 | Duty Cycle : S5 40% | Brake Voltage : 110 VDC | Max. Static Load : 2000 kg

Model No.	Duty Load(kg)	Passenger Capacity	Speed (m/s)	Sheave Dia. (mm)	Ratio of Roping	Sheave Groove (mm)	Rated Current (A)	Power (kW)	RPM	Torque (Nm)	Rated Frequency (Hz)	IP Protection	Start / Hr.	Machine Weight (kg) (Approx.)
RTG BD 06 C-87	450	6	1.00	87	2	2X60	9	3.40	439	75	58.5	IP41	180	80

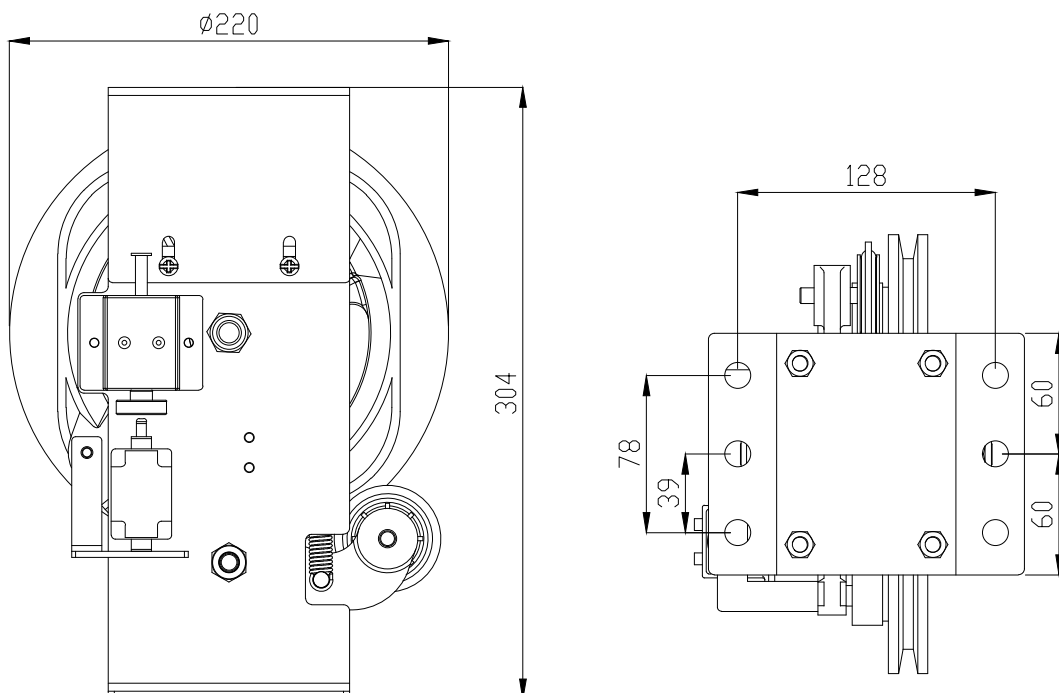




OSG Series

Technical Specifications

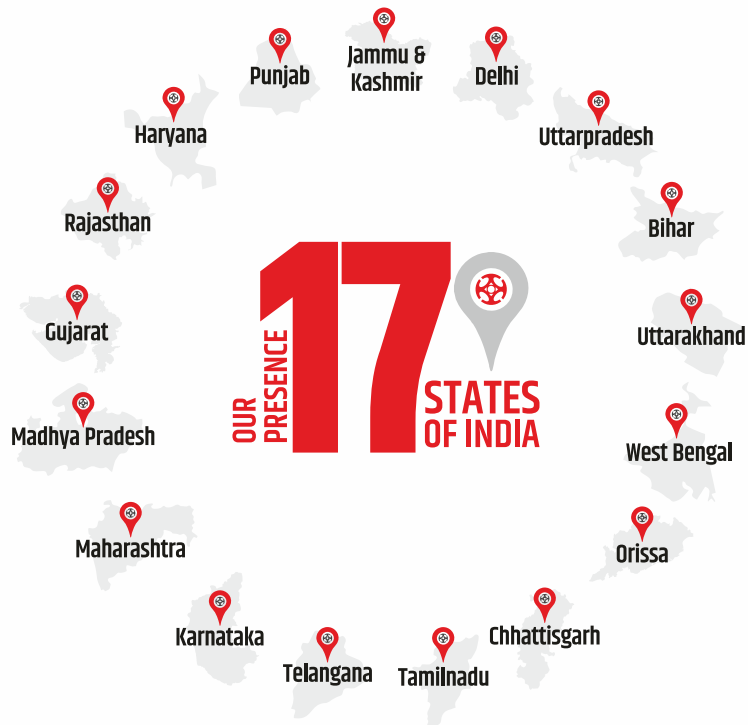
Model No.	Maximum Rated Speed (m/s)	Tripping Speed	Rope Dia.	Pulley Od Dia.
1	0.75	0.90	8	220
2	1.00	1.20	8	220
3	1.25	1.50	8	220
4	1.50	1.80	8	220



All dimensions are in mm



Power of Smart Engineering



GALLOP WITH GEARLESS TECHNOLOGY
AND RISE UP WITH THE REVOLUTION

Giving touch of Indian Manufacturing



ISO 9001 : 2015 CERTIFIED



Power of Smart Engineering

www.tectronicsindia.com



Power of Smart Engineering

TECTRONICS ENGINEERS

Regd. Office : 105, Royal Complex, Dhebar Road, Rajkot-360002, (Guj.) INDIA.

Plant : 59 to 62, Jaynath Industrial Area-3, Survey No. 148/1, Kothariya Main Road, Village : Lothda, Dist. Rajkot. Pin - 360022, (Guj.) INDIA.

Ph. +91-281-6546154, 96248 62262 Web : www.tectronicsindia.com, E-mail : info@tectronicsindia.com, Toll Free : 1800 1212 312